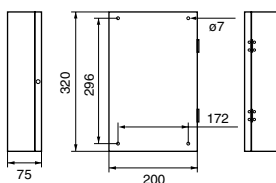


Indoor Receiver WV-RC100



- Indoor receiver unit for pan/tilt mechanism
- Supplies 24V AC to a camera and a pan/tilt mechanism

DIMENSIONS



Unit: mm

SPECIFICATIONS

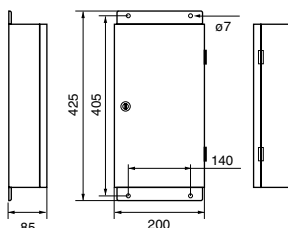
Power Source	WV-RC100/B: 230/240V AC 50Hz WV-RC100/G: 230V AC 50Hz
Power Consumption	85W
Input Signal/Camera Input	1V(p-p)/75 Ω (Multiplexed video and control data signal) (BNC connector)
Mic Input	600 Ω Balanced, -78dBV (1/4-type phone jack)(possible to use 600 Ω Unbalanced)
Output Signal /Video Output	1V(p-p)/75 Ω(Multiplexed FM audio, video and control data signal)(BNC connector)
Audio Output	-10dBV(at load impedance 10kΩ)
Speaker Output	1W with 8 Ω, (maximum)
Control Terminal	Aux-1: 240V AC, 3.5A cosφ= 0.4 (Power factor) Aux-2: 240V AC, 3.5A cosφ= 0.4 (Power factor)
Lens Voltage Supply	6V DC or 12V DC switchable (Fine adjustable)
Ambient Operating Temperature	-10°C - +50°C
Ambient Operating Humidity	Less than 95%
Dimension (W x H x D)	200 x 75 x 320 mm
Weight	4.7 kg

Outdoor Receiver WV-RC150



- Outdoor receiver unit for pan/tilt mechanism
- Supplies 24V AC to a camera and a pan/tilt mechanism

DIMENSIONS



Unit: mm

SPECIFICATIONS

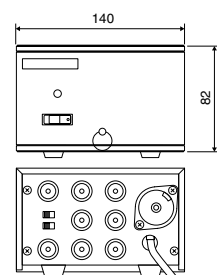
Power Source	WV-RC150/B: 230/240V AC 50Hz WV-RC150/G: 230V AC 50Hz
Power Consumption	220W
Input Signal/Camera Input	1V(p-p)/75 Ω (Multiplexed video and control data signal) (BNC connector)
Mic Input	600 Ω Balanced, -78dBV (1/4-type phone jack)(possible to use 600 Ω Unbalanced)
Output Signal /Video Output	1V(p-p)/75 Ω (Multiplexed FM audio, video and control data signal)(BNC connector)
Audio Output	-10dBV(at load impedance 10kΩ)
Speaker Output	1W with 8 Ω, (maximum)
Control Terminal	Aux-1: 250V AC, 3.5A cosφ= 0.4 (Power factor) Aux-2: 250V AC, 3.5A cosφ= 0.4 (Power factor)
Lens Voltage Supply	6V DC or 12V DC switchable (Fine adjustable)
Ambient Operating Temperature	-30°C - +50°C
Ambient Operating Humidity	Less than 95%
Dimension (W x H x D)	200 x 85 x 425 mm
Weight	8.3 kg

Video Distribution Amplifier WJ-300C



One video signal results in six video outputs, or two different video signals result in three each video output signals.

DIMENSIONS



Unit: mm